

# Comprehensive Safety Solutions for all Industries





**Head & Face Protection**



**Ear Protection**



**Eye Protection**



**Respiratory Protection**



**Body Protection**



**Hand Protection**



**Foot Protection**



**Fall Protection**



**Ladders & Scaffolds**



**Eyewash and Shower**



**First Aid**



**LOTO(Lockout-Tagout)**



**Fire Extinguisher**



**Fire Hydrant Solutions**



**Flame Proof Torch**



**Rescue Tools**



**Gas Detection**



**Road Safety**



**Signages &Tapes**



**Spill Control**



**Safety Cabinets**



**Safety Scissors**



**Non Sparking Tools**



**Electrical Safety**



**Anti-Static &ESD**



**Cryo Safety**



## HEAD PROTECTION

We Customize Helmets with your Company Logo\*



**Fusion**

**Full Brim  
Helmet**



**Vent Helmet**



**Midas  
Commander**



**Valpro Ranger**



**Premium  
Bump Cap**



**Supra Economy  
Bump Cap**



**Farm-Hats**



**Nape Type**



**Loader / Ladies**



**Helmet with  
Welding Shield**



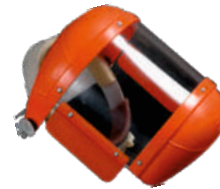
**Helmet with Face Shield**



**Premium  
Face Shield**



**Face Shield  
CE-EN**



**Face Shield with chin  
and side guard**



**Fogal  
(Face shield with Goggle)**

**Ear Muff  
Attachment**



**Ear Plug  
(Re-Usable)**



**Ear Plug  
Disposable**



**Ear Muff Venus**



**Ear Muff**



**Un-Corded  
Ear Plug**



**Ear Plug  
Dispenser**

## EYE PROTECTION



**UD-61 Anti Fog**



**Twister**



**UD-81**



**G102**



**UD 90 AF**



**Oswal Boss**



**Inox (Indoor/Outdoor)**



**Splash Goggles Economy**



**Uvex Ultra Vision  
(Auto Clavable)**



**Premium Splash  
Goggles Antifog**



**Smelter Helmet  
Attachment Cobalt Blue**



**Flip up Welder**



**Flip up Oswal**



**Over Spectacle**

**Edge Over  
(Over Spectacle)**



**Prescription Eyewear  
Model : 1273**



**Prescription Eyewear  
Model : 2371**



## HAND PROTECTION

### Material Handling Gloves



**Dotted  
Gloves**



**Leather  
Gloves**



**Traffi  
Cut / Water**



**Nitrile  
Coated**



**Nitrile Coated  
Cut Level 1**



**Aerolite B  
Cut Level 3**



**HPU 5  
Cut Level 5**



**Poly Rubber  
Coated Gloves**

### Heat Protection Gloves



**Kevlar Rubber  
Coated**



**IronCat  
Cut/Welding**



**Kevlar  
Solar**



**Kevlar Woven  
K2 600 Degrees**

### Speciality Gloves



**Impact  
Resistant**



**Anti  
Vibration**



**S.S. Mesh  
Gloves**



**Cryo  
Gloves**

### Chemical Handling Gloves



**Surgical  
Gloves**



**Disposable  
Nitrile  
Gloves**



**Rubber Orange  
Gloves**



**Nitrile  
Gloves**



**Neoprene  
Gloves**



**PVC Gloves  
with & W.o. Lining**

## BODY PROTECTION



**ESD Garment  
(Autoclavable)  
Umbrella**



**DuPont Tyvek  
(Lint Free Suit)**



**Tychem C  
(Inorganic Acids)**



**Tychem F  
(Organic Acids)**



**Disposable  
Lab Coat**



**PVC Apron**



**Tychem C  
Backopen Apron**



**TYCHEM TK Haz-Mat Suit**



**Rain Coat /  
Rain Suit**



**Aluminized  
Apron**



**Aluminized  
Fire Suit**



**Anti static - Chemical Resistant  
Multi Layered Flame Retardant Suit**



**Nomex /  
Proban  
Hood**



**Nomex III A  
(Flash Fire Suit)**



**Leather Apron**



**Leg Guard**



**Cryo Suit**

Cryo Apron, Boots also available



**RESPIRATORY PROTECTION**

**Venus Brand**



**3M Brand**



**~ Powered Air Purifying Respirators (PAPR)**



**Venus SCBA Set with Dual User and Dual Guage**



**~ Supplied Air Systems**





## FOOT PROTECTION

### Ladies Safety Shoes



Fiona



Monalisa

### Unisex Safety Shoes (Size 2-11)



Sporty



Cruz



UNI Comfort

### MicroFiber Shoes



Black Ranger



Red Ranger



Runner

### Premium Leather Safety Shoes



Boss



Glacier High Ankle

### Leather Safety Shoes



Prince



Cheetah



Alabama DD



I-Ryder



Rider



Dino

### Economy Safety Shoes

### Gum Boots



Lighboot



Gold Year

### Ankle Boot



Lighboot Jr.

### Cleanroom Safety Shoes



I-Blitz



I-Admire

Cleanroom shoes be be  
Made with Vent and ESD Option

## Disposable Products



Head Caps



Shoe Covers



3 PLY / 2PLY Mask



Beard  
Mask



Gloves



Disposable  
Lab Coat



Disposable Suit



## FALL PROTECTION

**Anchorage**

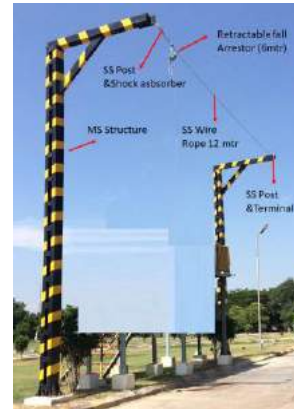
**Pipe Rack Lifeline System**



**Roof Lifeline System**



**Loading Area / Solvent Yard System**



**Vertical Fall Arrester**

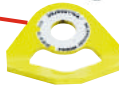


**Tripod with Winch**

**Reactor/  
Side Entry Tripod**



**Anchor Point**



**Web Slings**



**Wire Slings**



**Beam Roller**



**Horizontal Lifeline (Temporary)**

**Body Harness**



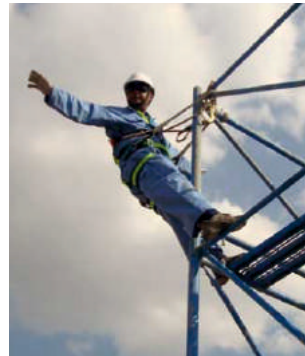
**ECO4 Harness  
ISI Approved**



**UB 102 Harness  
CE / EN Approved**



**Di-Electric  
Harness**



**Rescue / Work  
Positioning Harness  
with Safe Carrier  
for Tools / Hardware**



**Connectors**



**Snap Hook**



**Big Opening  
Scaffold Hook**



**Auto shut  
Screw Type**



**Y Type  
Shock Absorbing  
Double Life Line**



**Y Type  
Double Life Line**



**Single Life Line**



**Retractable Fall Arrester (SRL)  
3.5M, 6M, 10M, 15M, 20M, 32M**



**Fall Arrester Mini  
Block 2.5 Mt.**

## FALL ARREST AND RESCUE



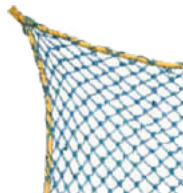
**IKAR Powerlift  
Rescue System**



**Suspension  
Trauma Strap**



**Painting and  
Maint.  
Kit**



**Personal Jali- Debris Net  
Protection Net**



**Personal & Particle  
Protection Net**



**Braided  
Net**



**Descender**



**Fall Arrester**



**Ascender**



**Glider**



**Kernmantel**



**PP Rope**



**Polyamide**

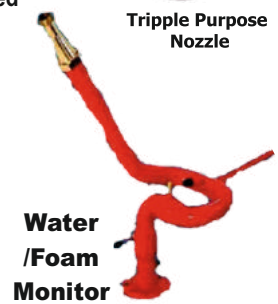


**FIRE FIGHTING EQUIPMENTS**

**FIRE EXTINGUISHERS**



Suppression Systems for :  
 Electrical Panel  
 UPS/Battery Rooms/  
 Documentation Room etc



**We Undertake Refilling, Installation, AMC & Servicing of All Fire Fighting Equipment**

**FIRST AID**



**We can provide all OHC Items on order**



**ROAD SAFETY PRODUCTS**



**SAFETY SIGNAGES**



**Anti-Skid and Floor Tapes**





## Portable Detectors

 <b>Single Gas Detector</b>	 <b>Dual Gas Detector</b>	 <b>Non-Contact (no need to blow) Breath Alcohol Analyzer Sloto K1</b>	 <b>Lux Meter</b>	 <b>Hygrothermo meter</b>	 <b>FLP Mobile Phone</b>
 <b>Multi-Gas Detector</b>	 <b>Dual Gas Detector</b>	 <b>Blackline Detector (Lone Worker Safety)</b>	 <b>Sound/Noise Level Meter</b>	 <b>Dosi Meter</b>	 <b>FLP Walky Talky</b>
		 <b>Motion Sensor</b>		 <b>Hand held Metal Detector</b>	

## FLP Mobile/ W.T.

## ONLINE MONITORING SYSTEM

 <b>Fixed Detector Single Hooter Integrated.</b>	 <b>Fixed Dual Gas Monitor</b>	 <b>UV + IR Detector (Heat / Flame)</b>	 <b>LPG Detector (Needs Panel)</b>
 <b>Smart Control Panel IOT Enabled</b>	 <b>We provide calibration &amp; Servicing of Gas Detector</b>		 <b>Economy Detector Panel</b>

## CONFINED SPACE BLOWERS

" data-bbox="605 460 775 605"/> <b>Flame Proof Blower with 12"/&gt;"</b>	 <b>5mtr - 15mtr duct.</b>
<b>Non-FLP Blower Also Available</b>	

## SAFETY TORCHES

 <b>Trident Head Lamp</b>	 <b>3AA Dualie Laser</b>	 <b>2AA ATEX Zone 0 Torch</b>	 <b>Vulcan 180 Searchlight</b>
 <b>Stylus Reach Penlight</b>	 <b>Smoke Cutter Survivor X</b>	 <b>Dualie Rechargeable</b>	 <b>Fire Vulcan</b>
 <b>Scene Light</b>			

## SIRENS & ALARMS

 <b>Electrical Siren/ ELP Hooter</b>	 <b>Manual Hand Operated Siren</b>
 <b>Mega Phone</b>	 <b>Wireless Ampli Mike</b>



### Safe Carrier



**Bottle Carrier for 100ml - 4ltr**



### Plunger Cans



**Flammable Liquid Can 2.5Gal/ Gal**

### SPILL MANAGEMENT

**Flame Proof Cabinets  
30Gal, 45Gal, 60Gal, 90gal**



**We also have  
PPE Boxes / SCBA Box**



**Spill kits for Chemical, Oil, Bio Hazard.**



**Industrial Oil Mats  
Clean Sticky Mats**



**Secondary Containment Pallet**

### ELECTRICAL SAFETY

**Electrical/ Arc Flash Gloves  
Class 00 (500v) - Class 4 ( 36kv)**



**Arc Flash Helmet**



**Arc Flash Suit  
8Cal, 25cal, 40Cal**

**Electrical Boot  
28kv**



**Cable Detector**



**ARC Boundary Signage**



**Electrical Rescue Hook / Puller**

**Earth Discharge Rod**



**Tank Ladder**

### SCAFFOLDS & LADDERS



**Hulker Ladder**



**FRP Ladder**

**Rope Ladder**

**Aluminium Ladder**



**Mobile Scaffold 3m to 15m**

### MARINE PROTECTION



**Life Jacket**



**Life Bouy**



**Shower Testing Kit**



**Wall Mountable Eye wash**

**Eyewash Floor Mounted**



**Ceiling Mounted Shower**



**Wall Mounted Shower**



**EyePod**



**Table Top Eyewash**



**Eyewash Bottle**



**Portable Eyewash Can**

**Eye & Body wash Combination unit**



**Valve for Eye Wash & Shower**



**Shower Head**



**Eye Wash Bowl**



**Automiser**



**Automiser Cap**

### NON SPARKING TOOLS



**Copper Titanium**

**Cylinder Keys, Drum Openers and Kits**

### ESD SOLUTIONS



**ESD Wrist Band**



**Surface Resistivity Static Charge Meters Footwear Testers**



**Earthrite System**

**Touch me Pads with / without Indicator**

### SAFETY CUTTERS

**Ceramic Scissor**

**Ceramic Industrial Cutter**

**Ceramic Pen Cutter**



**Ceramic Scrapper**

**Blade Vanishing Cutter**

**Cleanroom (SS) Cutter**

**Concealed Cutter**



## SLOTO LOCKOUT & TAGOUT



LT-LCS

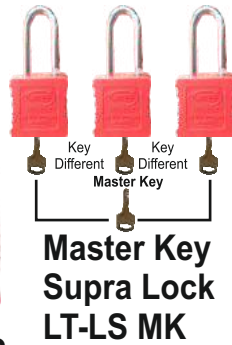


LT-LS DE

LT-LS



LT-LJ SK



Master Key  
Supra Lock  
LT-LS MK



LT-TDP



LT-TCM



LT-TFE

We Can also Customize



LT-TSR  
RED



LT-TSG  
Green



LT-TSY  
Yellow



Tag  
Holder



Pin in  
(LT-EPI)

Pin Out  
(LT-EPO)

Pin Out Wide  
(LT-EPW)

LT-EBB



LT-EBX

LT-EBM

LT-EBS

LT-EBL

LT-CK

LT-CM

LT-CH



LT-EHA

LT-EE 1

LT-EPB UNI

LT-EE 5

LT-EPL SM

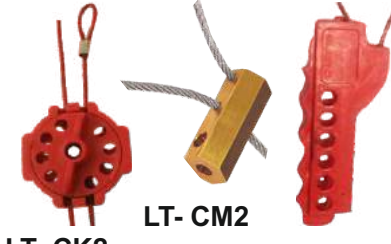


LT-HEF



LT-HVC

LT-HTG



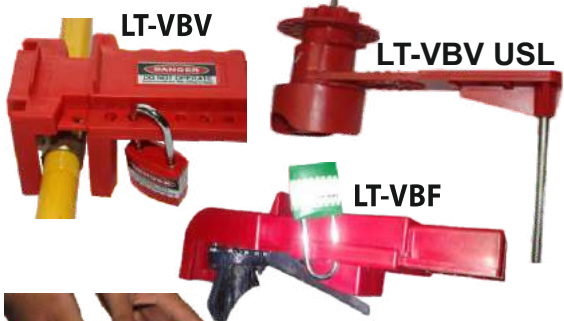
LT-CK2

LT-CM2

LT-CH2



Old Panel Solutions



LT-VBV

LT-VBV USL

LT-VBF



LT-VGV 80

LT-VGV ADJ



LT-VGV 300



LT-CYD

We conduct Survey & Training  
Also Modification Work for LOTO Panels



LT-SCL



LT-SWP



LT-SZP  
LOCKOUT  
TAGOUT  
KIT

LT-RIR Loto Register



LT-TWS Training Station



LT-SCM



## About us

### We are Family Business !

Started in 1995 as trading company selling PPE, we have transformed ourselves into one of the largest provider of Industrial Safety Solutions. Presence in 8 cities across the nation, a product range of over 3000 SKU's and warehousing facility of over 40,000sqft, We try to meet all your safety needs in time.

Our 50+ team members work like a family to serve you with latest and best safety equipments.

## Brands we Carry



Note : Above brands are owned by respective companies, we are only stating that we keep stock of these brands, and do not claim to be authorised Distributors / Channel Partners.

## Contact us



### Subham Safety Engineers

Safety House, 55 Malany Colony, New Bowenpally,  
Secunderabad, Telangana State, India 500011  
+91 40 42300068 | info@subhamsafety.com



#### Telangana

sales@subhamsafety.com  
040 423 000 68/ 91000 300 75

#### Karnataka

blr@subhamsafety.com  
7760 3333 12

#### North-East

assam@subhamsafety.com  
040 400 300 68 / 91000 300 88